



TERATECH NEWS

Tools for Programmers

12221 Parklawn Drive Ste 200 Rockville, MD 20852
(800) 447-9120 ? (301) 881-1440 ? Fax (301) 881-3586
<http://www.teratech.com/> info@teratech.com

Patricia Lima, Editor

December 2001

This month we cover:

- ?? TeraTech class schedule
- ?? VMWare
- ?? Management Tips Corner:
- ?? FTP programs

Class Schedule

CF 101 - Welcome to ColdFusion

Tuesday, January 8th, 2002

Half Day course: - \$199

Registration 11:30am

Class Noon-4pm

- ~ Introduction to ColdFusion
- ~ Samples of sites currently using

ColdFusion

- ~ When to/when not to use ColdFusion
- ~ Q&A

CF 102 - Introduction to ColdFusion

Wednesday, January 9th, 2001

Full Day course - \$349

Registration/Sign-in 9:30am

Class 10am-5pm

Introduction to ColdFusion

About ColdFusion

CF Tag Processing

Server vs Client Processing

Database Integration

- ~ColdFusion Query Processing
- ~DataSource Definition
- ~ Q&A

And much more.

For a listing of upcoming classes visit

<http://www.teratech.com/training/index.cfm>

VMWare

I used to perform testing by having several debug systems, all configured to multiboot the Windows flavors that I've enumerated, and booting into a version, testing, and then rebooting into the next. Besides being slow, testing would sometimes be skewed by interfering droppings of intermediate test builds of utilities that I hadn't cleaned up properly. While I still have a collection of multibooting systems for debugging problems, an innovative product called VMWare (www.vmware.com) has made my testing cycles faster and easier.

VMWare is a virtual machine environment that you use to create virtual computers (guests) that run on

top of Windows NT, Windows 2000, or Linux installations (hosts). A guest can run most variants of Windows, DOS, and Linux. Its disconcerting to see a version of an operating system run on top of another one, especially when you make a virtual machine full screen – there's virtually no way to detect that you aren't sitting at the screen of a Linux computer instead of a Linux computer's virtual display running on top of Windows 2000, for example. A virtual machine is a software-imposed box that encapsulates the operating system and applications running in the virtual machine so that when they try and interact with the hardware they believe is present, the virtual machine software intercepts the accesses. The virtual machine software creates virtual devices that serve as carefully controlled surrogates to real hardware or virtual hardware. For example, when an application that's running in a virtual machine that is being displayed in a window writes to the virtual machine's display memory, the virtual machine software updates the contents of the window that represents the virtual machine's display instead of letting the accesses touch the real video memory. If the virtual machine were running in full-screen mode then the virtual machine software would let such accesses manipulate video memory directly.

The virtual machine capability alone makes VMWare useful, since you can have any number of "test systems" lying around your hard drive. What makes VMWare even more powerful is the fact that you can "suspend" a virtual computer, saving its state to disk, and then later resume it, within seconds restoring the state it had when you suspended. But that's not all. I make extensive use of a feature called "non-persistent disks", which has VMWare start a virtual computer with its virtual disks containing the contents you've defined (for instance, with just a basic OS installation) and then track changes so that you can undo them and revert back to the starting state. If I install test versions of a utility and then need to make sure that I'm back at a clean state that doesn't reflect any of the utility's changes, I simply undo the changes. I also find VMWare useful in my user and systems administrator roles. Whenever I download an application that I'm not sure I want to keep, rather than possibly compromise my development system or fill it with left-behind debris when I uninstall an application, I simply try it in a virtual machine with a non-persistent disk first.

Management Tips Corner

Dual Ladder of Promotion

Motivation Through Equal Opportunity

The Dual Ladder came about as a result of the growth of high tech and the emergence of software. In the early days software, more than any other technology, attracted people who didn't communicate or interact well with other people. They were loners, the ultra-shy, so-called social misfits (not bad, just didn't mix well) but who still wanted a career path and a chance to earn more money. Before the idea of the Dual Ladder caught on, the only choice talented technical people had, if they wanted a promotion or a significant raise, was to move into management. The result was a lot of managers who hated to manage.

Although used most often in engineering, the concept applies just as easily to accounting. It offers a series of hands-on positions that equate straight across the board with management positions.

When implementing a Dual Ladder it is important to define the technical positions with the same care as you define the managerial ones, likewise, the promotions should be given with the same careful consideration.

Miki Saxon, RampUp Solutions Inc.
<http://www.RampUpSolutions.com>
miki@RampUpSolutions.com

FTP programs

FTP programs that can resume downloads:

Bulletproof FTP

We've heard very good things about it; lots of features, not too expensive. However, there is no free personal use version; just limited-time free demo. (Can automatically resume connection)
<http://www.bpftp.com/>
 about \$30

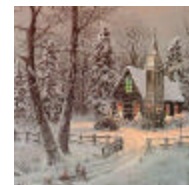
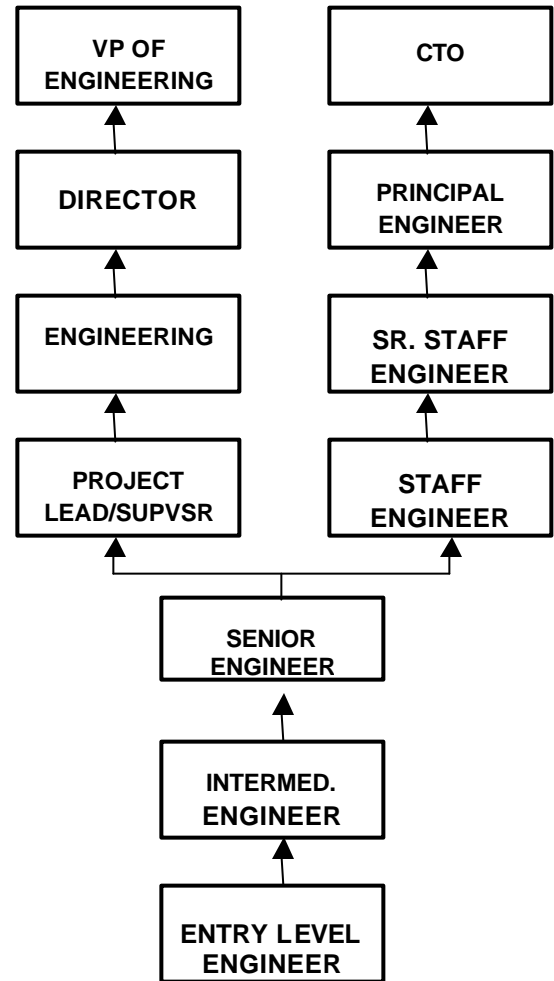
FTP Explorer.

Can also resume (but not automatically), very easy to use, but has fewer features than BPFTP, and has free full-featured personal version. Explorer-style interface, and you can check multiple directories and it'll get listings in background.
<http://www.ftpx.com/>
 about \$38

CuteFTP

<http://www.cuteftp.com/>
 about \$40+

DUAL LADDER CAREER PATHS



Copyright TeraTech 2001
 TeraTech, Inc.
 12221 Parklawn Drive, Suite 200
 Rockville, MD 20852

TERATECH CUSTOM PROGRAMMING

- o ColdFusion
- o VisualBasic
- o SQL, Oracle, Access, FoxPro
- o Numeric Analysis